

foto: NSW Gov

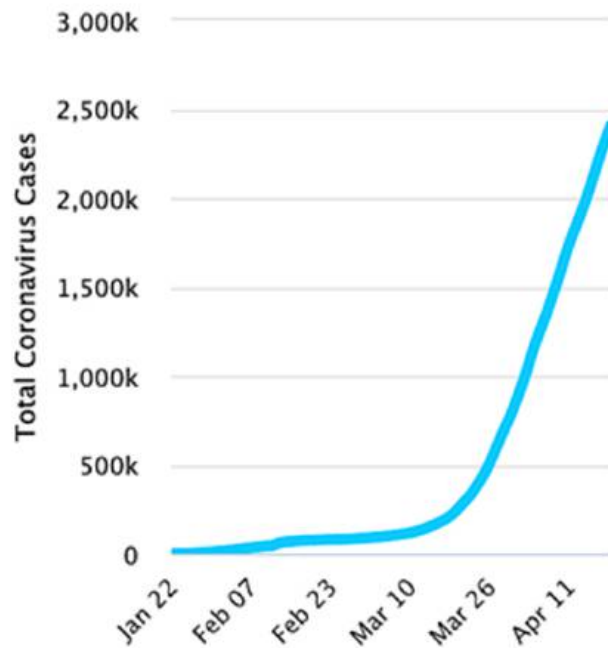
# Large-Scale Social Collaboration

An open call to unite in the COVID-19 pandemic in DKI Jakarta Province

Pemprov DKI Jakarta  
28 April 2020

# Confirmed COVID-19 cases trend is still growing...

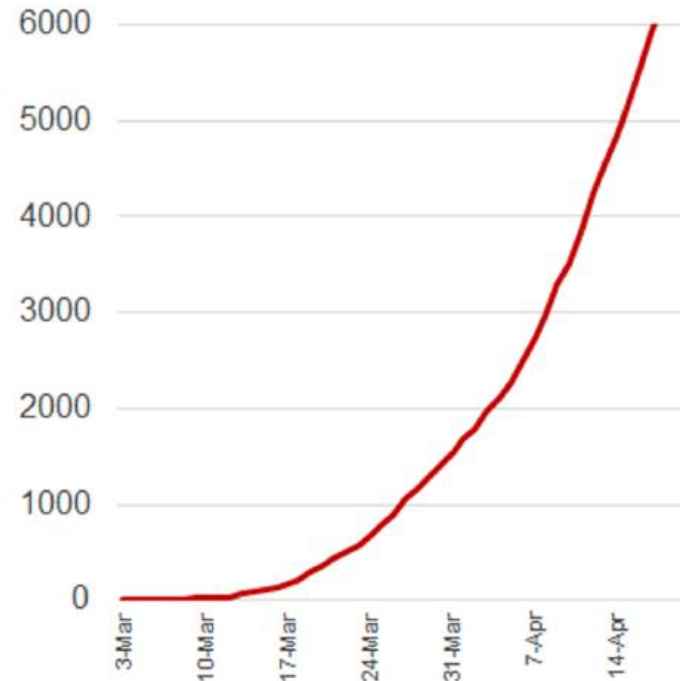
## World



Positive cases: **2.995.000**  
Deaths: **207.000**

Data as of 27 April 2020

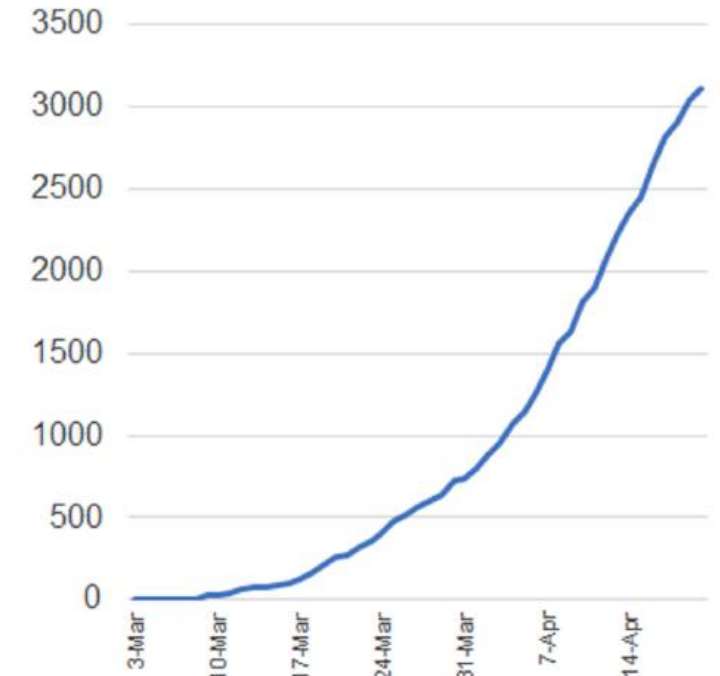
## Indonesia



Positive cases: **8.882**  
Deaths: **743**

Data as of 26 April 2020

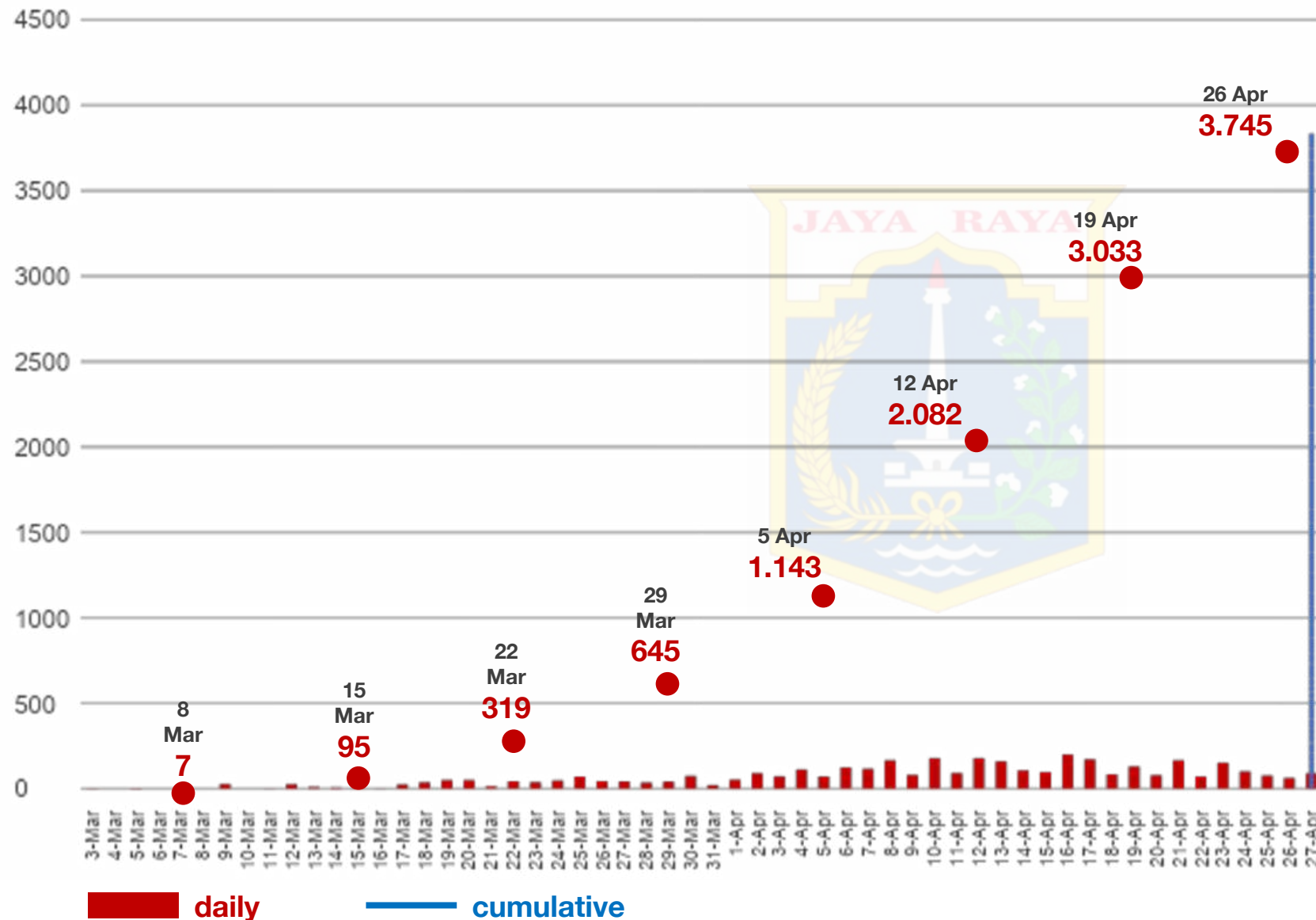
## Jakarta



Positive cases: **3.835**  
Deaths: **375**

Data as of 27 April 2020 – 08.00

# Positive cases spread faster in Jakarta...



**3.835 positive cases**

Positive cases number is also determined by testing time and capacity

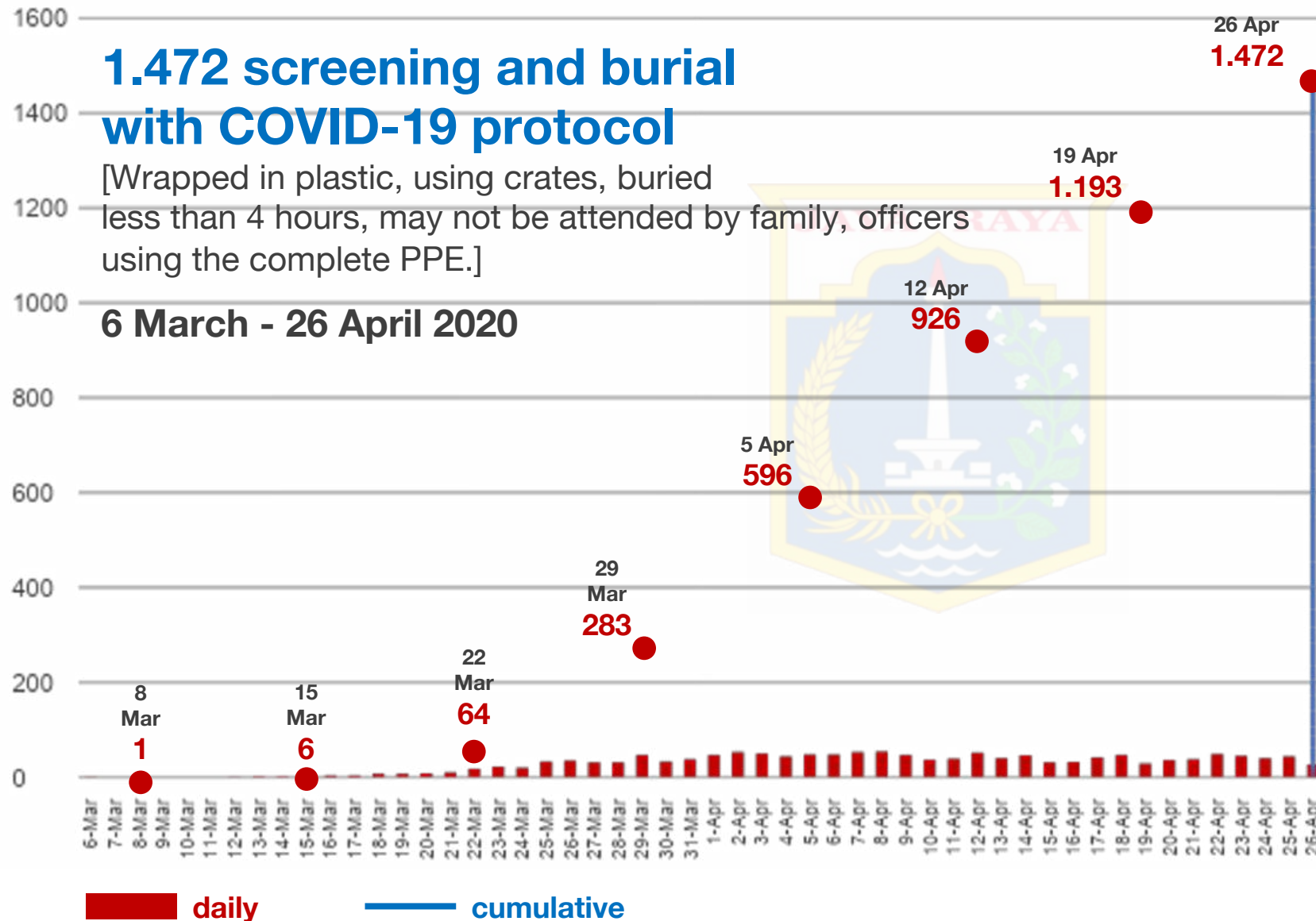
Total COVID-19 deaths in Jakarta as of 27 April are **375**.

# Scouring and burial with the COVID-19 protocol continue to rise ...

## 1.472 screening and burial with COVID-19 protocol

[Wrapped in plastic, using crates, buried less than 4 hours, may not be attended by family, officers using the complete PPE.]

6 March - 26 April 2020



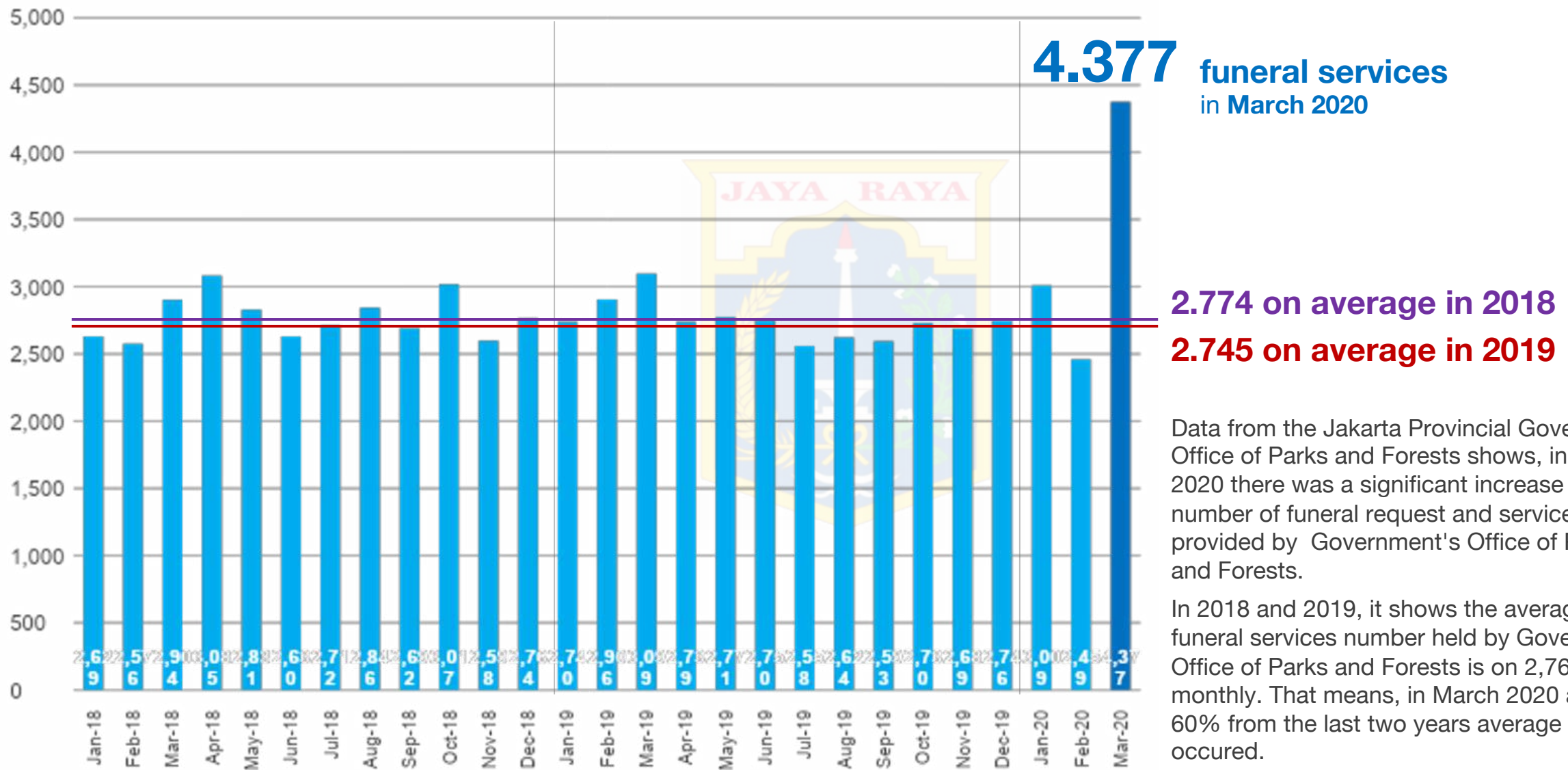
Data from the Jakarta Provincial Government's Office of Parks and Forests shows that from March 6, 2020 to April 26, 2020, **1,472 scavenging and burials** were carried out in the category of infectious diseases and with the COVID-19 protocol.

This number is greater than the official number of deaths due to COVID-19. This might be caused by:

- a. People die before they have a test or
- b. The victim was tested but died before definitive results came out.

Therefore, formally, some of these people cannot be recorded as dying due to COVID-19.

# Funeral Services by Government's Office of Parks and Forests increased in March...



Data from the Jakarta Provincial Government's Office of Parks and Forests shows, in March 2020 there was a significant increase in number of funeral request and service provided by Government's Office of Parks and Forests.

In 2018 and 2019, it shows the average of funeral services number held by Government's Office of Parks and Forests is on 2,760 monthly. That means, in March 2020 a rise of 60% from the last two years average number occurred.

# COVID-19 mortality rate in Jakarta is high...

Country/City	Cases	Deaths	Mortality Rate
France	162.100	22.856	14,1%
Great Britain	152.840	20.732	13,6%
Italy	197.675	26.644	13,5%
<b>Jakarta</b>	<b>3.835</b>	<b>375</b>	<b>9,8%</b>
Iran	90.481	5.710	6,3%
USA	987.322	55.415	5,6%
China	82.830	4.633	5,6%
Japan	13.441	372	2,8%
South Korea	10.738	243	2,3%
New Zealand	1.469	19	1,3%
Australia	6.719	83	1,2%
Saudi Arabia	17.522	139	0,8%
Singapore	13.624	12	0,1%
Vietnam	270	0	0%

Jakarta data as of 27 April 2020

The extreme mortality rate that is beyond the global average, indicates two possibilities:

1. Ineffectiveness of medical facilities to handle the pandemic [potentially caused by service quality or overload by the number of cases]; or
2. The real mortality rate remained around 5% as the world average, but there were many undetected positive cases.

If the real one was condition number 2, then in this position the positive cases in Jakarta would be about **5.435**. However, approximately **1.600 people** are not recorded and they did not even realize if they were positive COVID-19.

# DKI Jakarta Provincial Government's Efforts

## HEALTH



Increasing the capacity of health facilities



Protect and improve the welfare of health workers



Early Treatment



Social Distancing

## SOCIAL ECONOMY



Updating of vulnerable community data



Re-engineering and intensification of social assistance packages



Relaxing economic dependents during the COVID-19 period



Other Economic Policy Packages

# Who needs our hand?

Lend a hand : The wealthy to help the vulnerable

## Collaborative Action

~ 6,8 million wealthy population + foreign nationals

DKI Jakarta population

### Group of people that need additional basic food supply

Laid off workers

informal labor  
(taxi drivers,  
non-jaklingko  
bus drivers)

Ride-sharing  
drivers

128,614 of  
Elders

714,000  
Freelancers

35,000  
Micro, small, &  
medium-sized  
businesses

Vulnerable Non-Jakarta citizens

3,7 million vulnerable population

Unregistered  
non-Jakarta  
vulnerable  
population

Comers (Non-Jakarta Citizens)

# Large-Scale Social Collaboration – Urgent: SosioEco Program



Source: Mediabogorid, 2020

Ramadhan is the holy month and usually be a momentum to share with others.

Whilst in Large-Scale Social Limitation (PSBB) condition, solidarity and a sense of togetherness of Jakarta residents have to be maintained. Thus Pemprov DKI Jakarta initiates:

## Large-Scale Social Collaboration

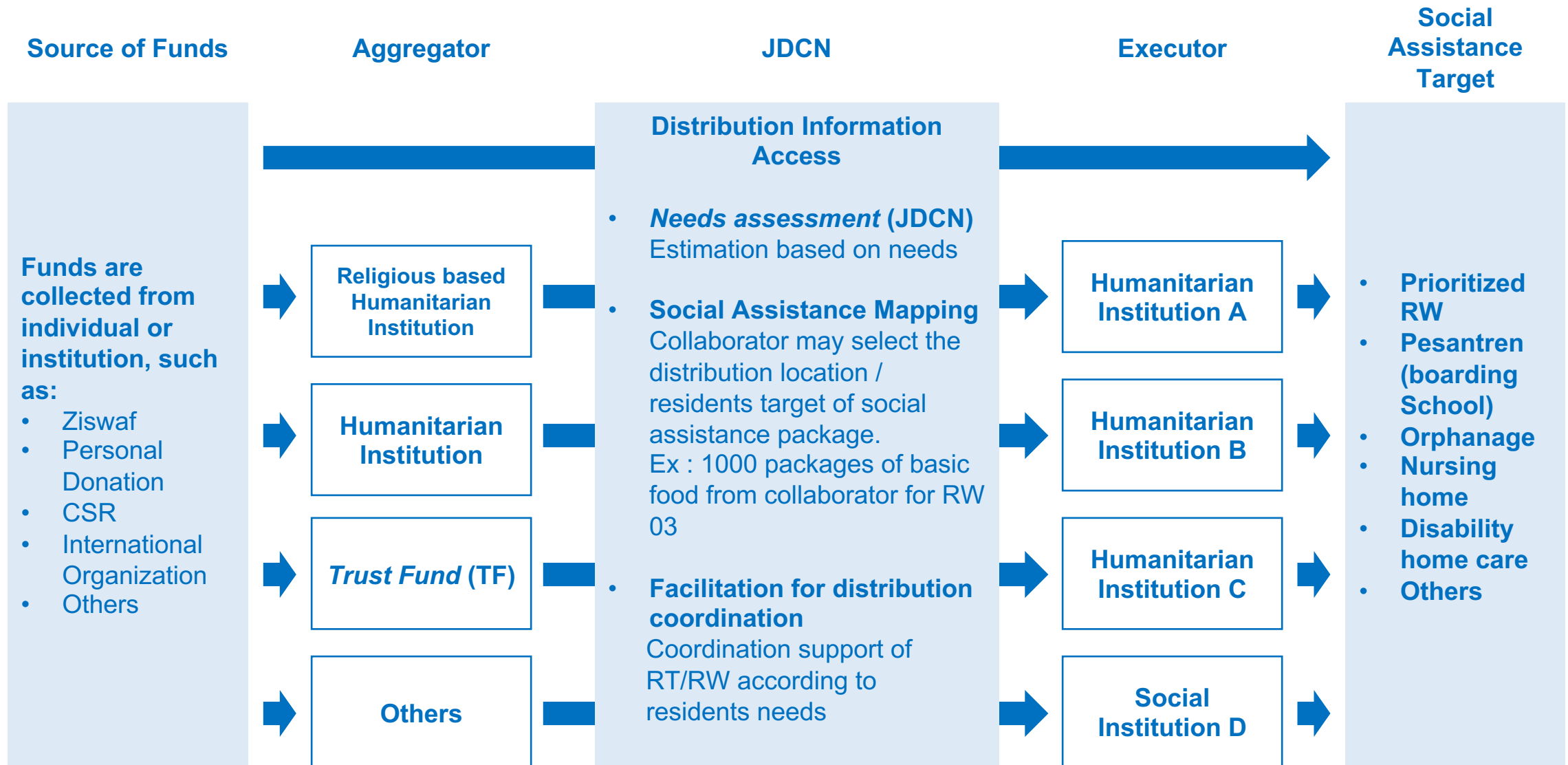
### #BantuSesama

Together helping each other with the support from people who care about:

- *RW - Village Association*
- Orphanage
- Pesantren (boarding school)
- Nursing home
- Etc...

Large-Scale Social Collaboration will open for collaboration with other programs in the future

# Governance Program KSBB #BantuSesama



\*) The execution to be guided by COVID-19 task force on each level of DKI Jakarta province, Administrative City, District, Urban Village, RT/RW

# How to join the program?

Open KSBB page



Select the social assistance target (RW, Boarding school, Orphanage, and etc)



Collaborator decides the social assistance package (type, quantity, time period)



Submit the package commitment to website (can be discussed if needed)

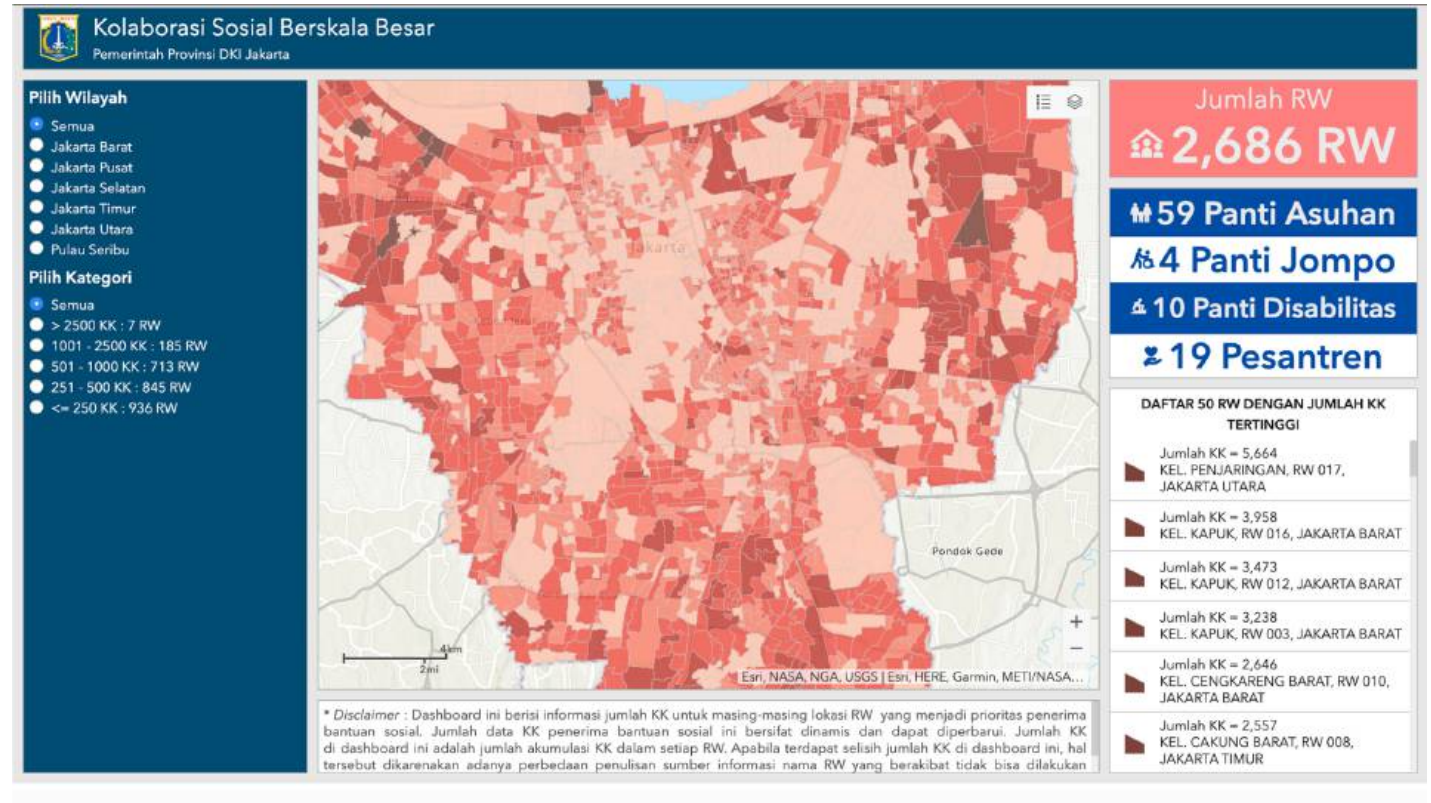


Coordination of realization



Collaborator informs the realization

<https://corona.jakarta.go.id/id/peta-kolaborasi-sosial>



# Alternatives and Estimated Values of Social Assistance Packages

## Food Package for 7 days



### Siap Saji (ready meal) Package

**Rp 45,000 / person / day\***

\*) Minimum for a week & 1 Household @4 people

1. Rice
2. Vegetables
3. Side dishes
4. Beverage
5. Takjil (for iftar/  
break the fast.)  
*or other similar form*

### Sembako (staple food) Package

**Rp 200,000 / Family / week\***

\*) Recommended as it lasts longer

1. Rice 5 Kg
2. Cooking oil 2L
3. Wheat flour 1 Kg
4. Condensed milk 1 can
5. Sugar 1 Kg
6. Tea and instant coffee
7. Sardines 1 can
8. Instant noodles 5 pcs
9. Margarine 200 Gr
10. Dates 500 Gr  
*or other similar form*

### Lebaran Package

**Rp 85,000 (1x)**

1. Syrup 580 ml
2. Biscuit
3. Sugar
4. Sariwangi tea
5. Nata De Coco  
*or other similar form*

### THR Package

**Rp 50,000 / person\* (1x)**

\*) to be assumed 4 people per Household

**Cash Rp 50,000**

# An illustration : 962 B total of funding requirement (Assumption : Sembako package)

Target Program	Food Package for 7 days		Eid Package		Information
	Siap Saji Package (ready meal)	Sembako Package (basic food)	Lebaran Package	THR Package	
RW with <250 Household (HH)	Rp 315 million /week	Rp 50 million /week	Rp 22 million (only once)	Rp 50 million (only once)	<b>Total : 962 RW</b> Price calculated based on the highest package value per RW
RW with 251 - 500 HH	Rp 630 million /week	Rp 100 million /week	Rp 42,5 million (only once)	Rp 100 million (only once)	<b>Total : 856 RW</b> Price calculated based on the highest package value per RW
RW with 501 - 1000 HH	Rp 1,26 Billion /week	Rp 200 million /week	Rp 85 million (only once)	Rp 200 million (only once)	<b>Total : 712 RW</b> Price calculated based on the highest package value per RW
RW with 1001 - 2500 HH	Rp 3,15 Billion /week	Rp 500 million /week	Rp 212,5 million (only once)	Rp 500 million (only once)	<b>Total : 185 RW</b> Price calculated based on the highest package value per RW
RW with 2501 – 5000 HH	Rp 6,3 Billion /week	Rp 1 Billion /week	Rp 425 million (only once)	Rp 1 billion (only once)	<b>Total : 7 RW</b> (there is 1 RW with 5700 KK)
Dhuafa/ Orphans boarding school*	Rp 330 million /week	Rp 52,5 million /week	Rp 22 million (only once)	Rp 52,5 million (only once)	Price calculated based on total expense for all location
Orphanage**	Rp 1,5 Billion /week	Rp 235 million /week	Rp 100 million (only once)	Rp 235 million (only once)	Price calculated based on total expense for all location
Nursing home**	Rp 325 million /week	Rp 51,5 million /week	Rp 22 juta million (only once)	Rp 52 million (only once)	Price calculated based on total expense for all location
Disability home care**	Rp 805 million /week	Rp 128 million /week	Rp 54 juta million (only once)	Rp 128 million (only once)	Price calculated based on total expense for all location

\* Assumption: each boarding school occupied by 50 students

\*\*Assumption: each orphanage is filled to capacity

# Aggregators in partnership...



PROVINSI  
DKI JAKARTA



# KSBB Update : 27 April 2020

**20**

Collaborators

**172,900**

Total package commitment

at least

**261 / 2686**

RWs Affected

**69 / 69**

Commitment for  
orphanages

**0 / 8**

Commitment for  
nursing homes

**0 / 6**

Commitment for  
disability home  
care

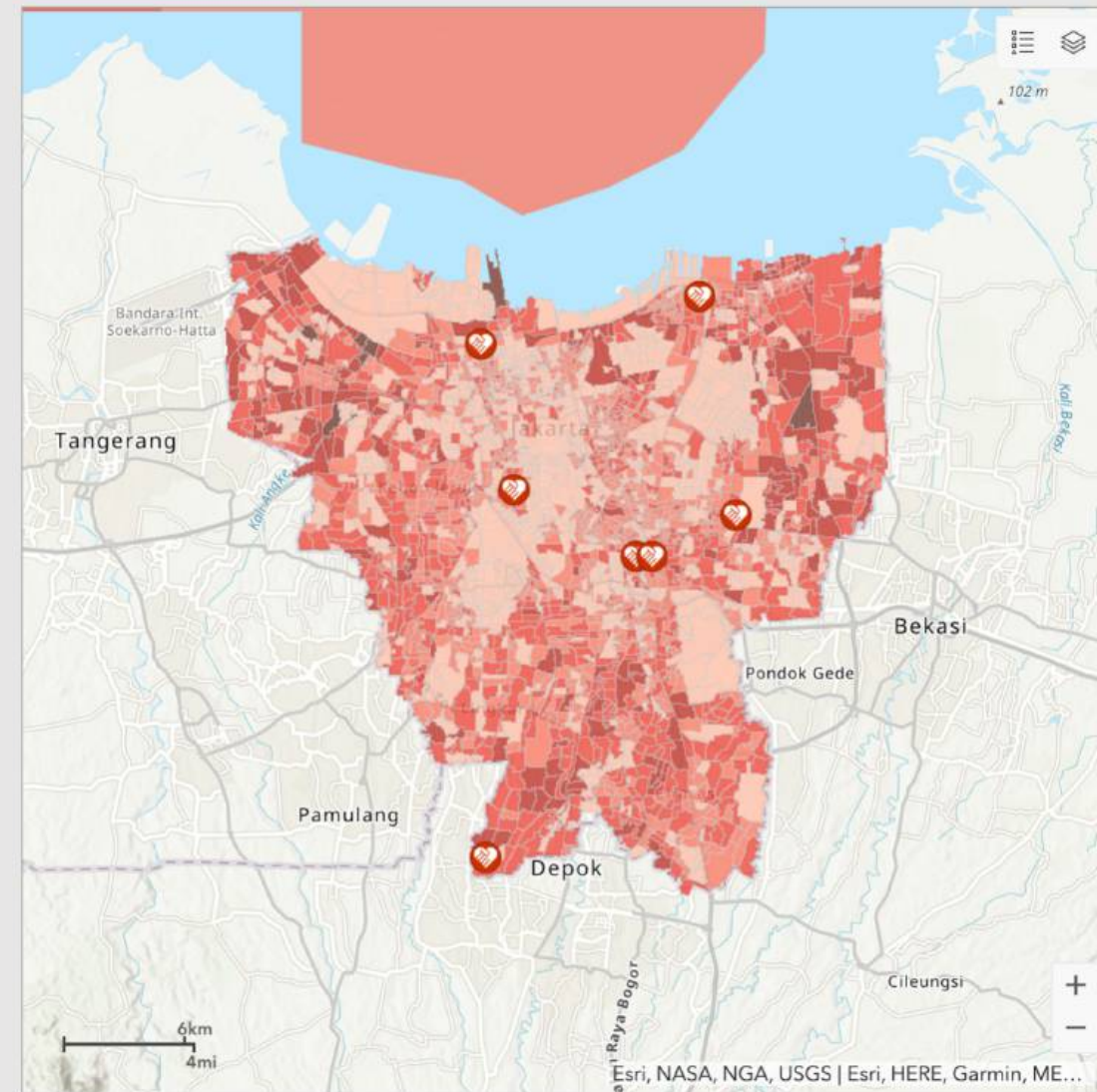
**118/118**

Commitment for  
Pesantren  
(boarding school)

## LIST OF COLLABORATORS

- BAZNAS BAZIS Sembako for all Pesantren and Orphanage
- Foodbank 52,000 Sembako Packages
- PMI (from Palyja and Aetra) 45,483 Sembako Packages
- Indofood 22,000 Sembako Packages
- Sintesa via Grab 20,000 ready meals
- Bukalapak 20,000 Sembako Packages
- Aksi Cepat Tanggap 750 Sembako Packages, 2,800 ready meals
- Rumah Zakat 2,116 Sembako Packages
- YBM PLN 1,350 Sembako Packages

- Lippo (under discussion)
- Detik Network (under discussion)
- GAPMMI (under discussion)
- Indosat (under discussion)
- Northstar (under discussion)
- Tri Putra (under discussion)
- Astra (under discussion)
- CSR BCA (under discussion)



\* Disclaimer : Dashboard ini berisi informasi jumlah KK untuk masing-masing lokasi RW yang menjadi prioritas penerima bantuan sosial. Jumlah data KK penerima bantuan sosial ini bersifat dinamis dan dapat diperbarui. Jumlah KK di dashboard ini adalah jumlah akumulasi KK dalam setiap RW. Apabila terdapat selisih jumlah KK di dashboard ini, hal tersebut dikarenakan adanya perbedaan penulisan nomor informasi nama RW yang berakibat tidak bisa dilakukan pemetaan.

**It is the time when every single act counts. Together, we prevent this disaster.**

**#FaceltTogether**

Information : [corona.jakarta.go.id](https://corona.jakarta.go.id)

Instagram : @dkijakarta @plusjakarta

Contact : +62 811 9600 0196/+62 811 9600 0197/+62 811 8348 899

Email : sekretariat.jdcn@jakarta.go.id

**It's time to act.**

## **SOP Large-Scale Social Collaboration (KSBB)**

# Alternative Collaboration Methods

## Collaborator Type

## Collaborator Role

## Information

### A. Donors

Fund owner,  
individual or group

#### A.1 Not distributing donation

Partial

have no partnership

Donation through Aggregator

Full

have no partnership

Donation through Aggregator

#### A.2 End-to-End

Full, one location at minimum

Independent / have  
partnership

Donation through website

#### A.3 Multi-Target

Full and massive (multi-target)

Independent / have  
partnership

Donation through DKI Jakarta  
Provincial Government  
Facilities

### B. Aggregator

Legal entity and  
licensed social  
funding institution

#### B. Aggregator

Fully fund raising from various  
parties

Independent

Donation with cooperation  
agreement through facilitation  
of DKI Jakarta Provincial  
Government

# A.1 Donors : Not distributing donation

## When :

1. Total donation is **less than** available package value and/or
2. Donor is **unable to distribute donation** to target location independently

## Collaboration flow:

**Find information of  
Aggregators, who are  
in partnership with  
KSBB Pemprov DKI  
Jakarta program**



**Select and contact the  
Aggregator**



**Communicate dan  
discuss your donation  
with Aggregator\***

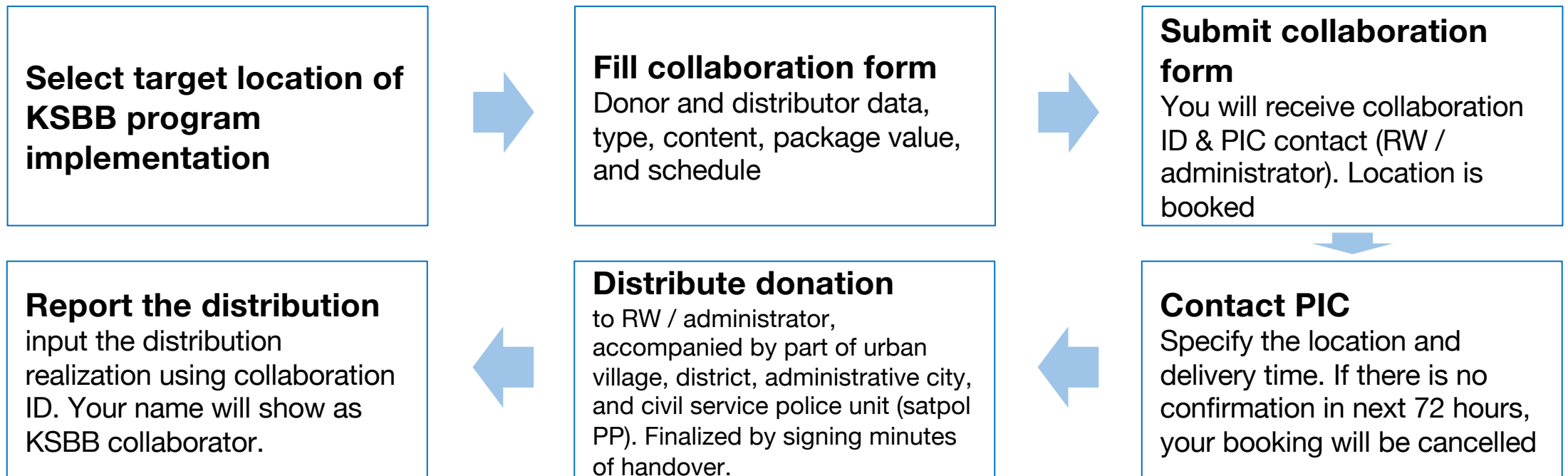
\*) Donation will be processed  
according to Aggregator  
conditions

## A.2 Donors : End-to-End

### When:

1. Total donation **suffices** the available package value
2. Donor is **able to distribute donation** to target location independently

### Collaboration flow:

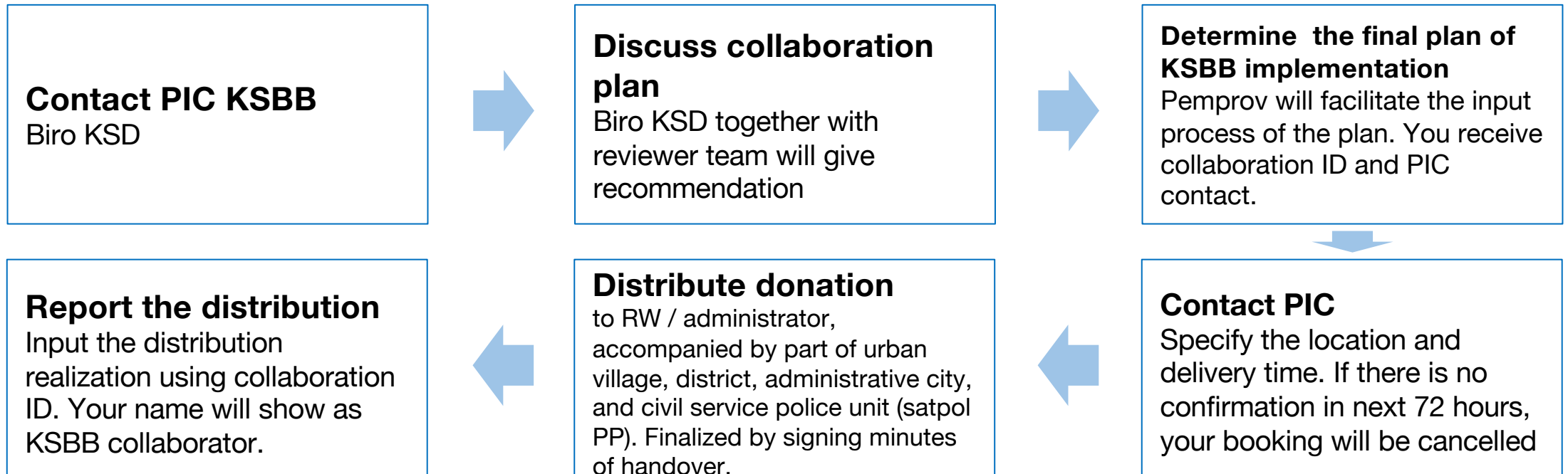


## A.3 Donors : Multi-Target

### When:

1. Donation is given ***end-to-end, massive, and multi-target***
2. Donors is **able to distribute donation** to target location independently

### Collaboration flow:



## B. Aggregator

### If you are:

1. Legal Entity
2. Licensed Social Fund Collection Institution

### Collaboration Flow:



**Thank You**